



### Application

Ideal for calibration of thermocouples, RTDs, gauges, thermometers, switches, transmitters, etc.,

### Features

- Dry Block.
- Fast Heating & Cooling.
- Controlled through PID Controller.
- Good Stability.
- RTD & TC measurement facility (for NTC (i) model).



\*This image is for marketing purposes; the actual instrument may vary slightly\*

Range(@ Ambient 25°C)	: -30°C to 140°C
Resolution	: 0.01°C up to 99.99°C & 0.1°C above 99.99°C
Accuracy	: ±0.3°C
Stability	: ±0.03°C
Stabilization Time	: 10minutes
Units	: °C/°F Switchable
Display	: LED Green
Heating Time (Ambient to 140°C)	: 15 minutes (approx.)
Cooling Time (Ambient to -30°C)	: 20 minutes (approx.)
Immersion Diameter	: 19.5mm
Immersion Depth	: 110mm
Power Supply	: 230V AC ±2.5/50Hz.
Dimensions	: 165 x 225 x 365mm
Weight	: 11Kgs

## NTC-30(i) WITH

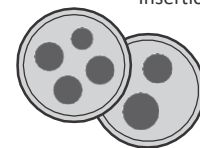
### MEASUREMENT FACILITIES

Input Types		Range
Thermocouple	J	-50 to 660°C
	K	-50 to 660°C
	R	-50 to 660°C
	S	-50 to 660°C
	N	-50 to 660°C
	B	0 to 660°C
	L	-50 to 660°C
T	-50 to 400°C	
RTD	Pt100	-200 to 660°C

accuracy of measurement: ±0.05% of reading ± 2 LSD

### Standard Delivery

- Instrument : 1no.
- Power Cable : 1no.
- Insertion tube : 1x8.2,1x6.5,1x4.2mm.
- leather Carrying bag: 1no.
- Test Lead 2 Wire-1 No
- Test Lead 3wire-1 No
- Spare Fuse : 3A-2 nos
- User Manual : 1no.
- Traceable Calibration Certificate Standard



Custom Built Insertion Size



Leather Carrying Bag

### Optional

- Contact us for Custom Built Multi hole Insert.
- Accredited (NABL) Calibration Certificate as per ISO/IEC 17025 Standard

The information given in this document is subject to change due to continuous improvement without notice. All Rights Reserved by R&D Instrument Services, Chennai, India.

### Contact

5, Natesan Nagar, Alapakkam,  
Chennai 600116, Tamilnadu, INDIA.  
Tel.: +91-44-4283 9039 / 4284 1119  
Mobile Nos.: +91-7358393981/7358393984  
email: sales@rndinstruments.com  
quote@rndinstruments.com